

Product: Anti-AtpA (ATP synthase subunit α)

Product no: AS08 304

Product Information

Antibody clonality: Polyclonal

Raised in: Rabbit

Purity: Serum

Quantity: 100 μ l

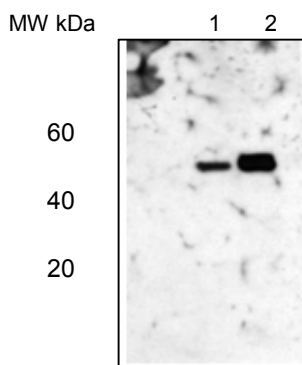
Antibody form: Lyophilized. For reconstitution please add 100 μ l of sterile water. Please, remember to spin tubes briefly prior to opening them to avoid any losses that might occur from liquid or lyophilized material adhering to the cap or sides of the tubes.

Storage instructions: -20°C or -80°C long Term storage (years). Please, avoid freezing and thawing of antibodies. Freeze in aliquots instead. Each diluted aliquot can be used repeatedly to probe immunoblots with little loss of sensitivity. Diluted aliquots stored at 4 °C in the presence of NaAzide (0.02%) are typically useful for several months.

Application information:

Western Blot: 1: 10 000 (ECL)

MW: 55 kDa



Background

ATP synthase is the universal enzyme that synthesizes ATP from ADP and phosphate using the energy stored in a transmembrane ion gradient. AtpA is the largest subunit of the membrane-extrinsic ATP synthase subcomplex.

Immunogen: Recombinant maize chloroplast AtpA

Gene accession number: GenBank NP_043022

Reactivity: Established to react with dicot and monocot chloroplast AtpA. May cross-react with mitochondrial AtpA.

References: McCormac and Barkan (1999) A nuclear gene in maize required for the translation of the chloroplast *atpB/E* mRNA. Plant Cell 11: 1709-1716.

Lane 1: *Arabidopsis thaliana* total leaf protein extract;
Lane 2: *Zea mays* total leaf protein extract
(5 μ g of total protein were loaded per lane)

Experimental conditions:

Proteins were separated in a 12% or 5-15% gradient gel following by a transfer to nitrocellulose membrane. Membrane was blocked with TBST + 4% non-fat dried milk, 20 min following by three washes in TBST. Incubation time with primary and secondary antibodies was 1 hr primary, 30 min for secondary antibodies. Manufacture of secondary antibodies: Bio-Rad

Antibodies are intended for the research use only not for diagnostic or therapeutic use.

Product support: inquiry@agrisera.com, <http://www.agrisera.com>

Product: Anti-AtpA (ATP synthase subunit α)

Product no: AS08 304

Agrisera

Antibodies for plant sciences

Antibodies are intended for the research use only not for diagnostic or therapeutic use.

Product support: inquiry@agrisera.com, <http://www.agrisera.com>

Mailing address: Box 57, S-911 21 Vännäs, Sweden
Phone/Fax: +46 (0)935 33033 / +46 (0)935 33044
Website: www.agrisera.com

International Bank Account Number (IBAN)
SE42 6000 0000 0001 15217258, S.W.I.F.T. address: HANDSES
Bank: Svenska Handelsbanken, S-106 70 Stockholm, Sweden
VAT number: SE556263276901 (Tax identification number)